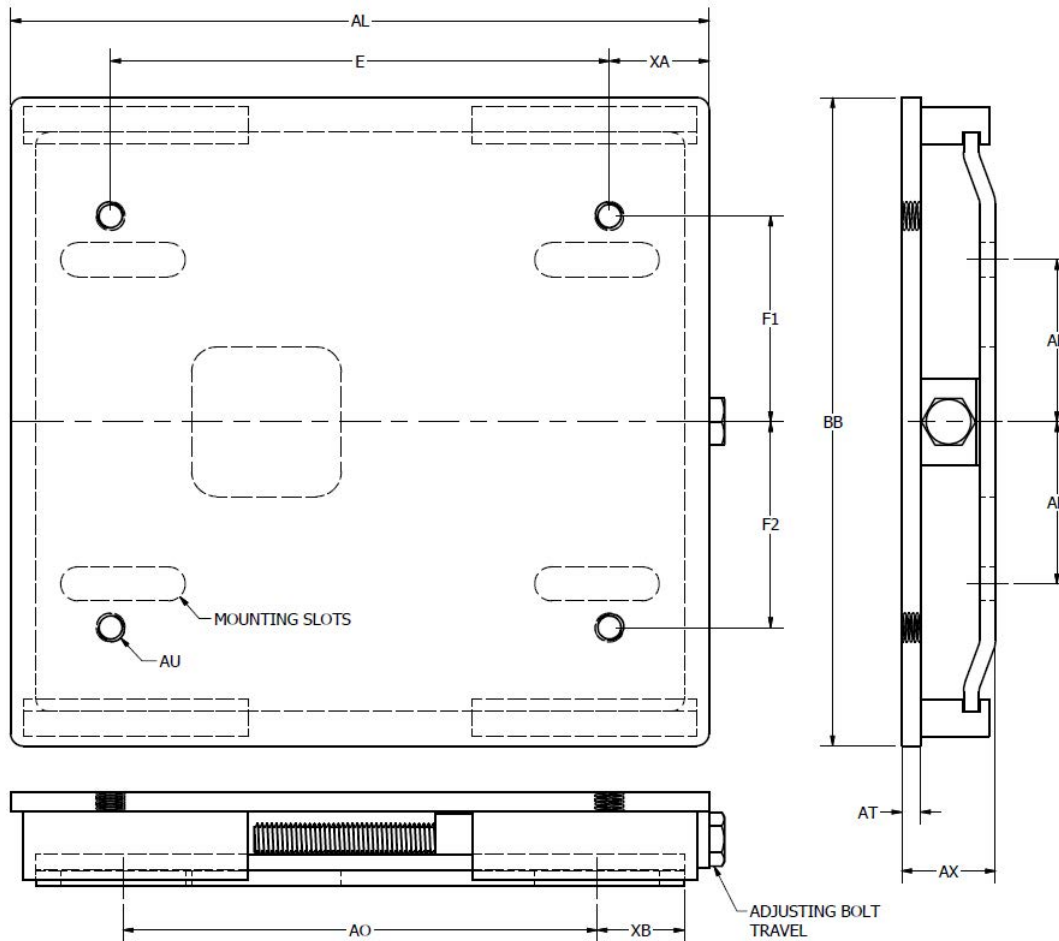


OVERLY HAUTZ COMPANY

THE WORLD'S MOST COMPLETE LINE OF MOUNTING PRODUCTS

HEAVY DUTY SLIDE BASES



DIMENSION CHART FOR HEAVY DUTY SLIDE BASES

PART NUMBER	FRAME SIZES	AL	BB	AX	AT	AR	XB	AO	XA	E	F1	F2	AU	MOUNTING SLOTS	ADJUSTING BOLTS	TRAVEL
11B	254	14.00	13.00	1.88	0.38	3.25	1.75	9.50	2.00	10.00	4.13	4.13	1/2"-13	.69 X 2.50	5/8"-11	6.75
11B MOD-	184								3.75	7.50	2.75	2.75	3/8"-16			
	213	2.75	8.50	3.50	3.50											
215	14.00					13.00	1.88	0.38	3.25	1.75	9.50	1.50	11.00	4.75	4.75	1/2"-13
22B MOD-		284	2.88	8.25	3.50							3.50	3/8"-16			
		215	2.00	10.00	4.13							4.13	1/2"-13			
		254			5.00							5.00				
256	16.00	15.75	1.94	0.38	3.88	1.75	10.50	1.75	12.50	6.00	6.00	5/8"-11	.69 X 2.50	5/8"-11	6.75	
33B MOD-								324	3.00	10.00	5.25	5.25				1/2"-13
	326	2.50	11.00	4.75	4.75											
	256			18.00	16.50	1.94	0.38	4.00	1.75	12.50	2.00	14.00	5.13	6.13	5/8"-11	5/8"-11
45B MOD-	364	6.13	6.13													
	365			2.75	12.50	5.75	4.75									
324																

BASES SUITABLE IF MOTOR FRAME IS SUCCEEDED BY S, T, U, US OR ANY LETTER COMBINATION THAT COMPLIES WITH NEMA STANDARDS

PART NUMBERS WITH A "MOD-" WILL HAVE ADDITIONAL HOLES DRILLED AND TAPED FOR THE REQUESTED FRAME SIZE WHEN ORDERED