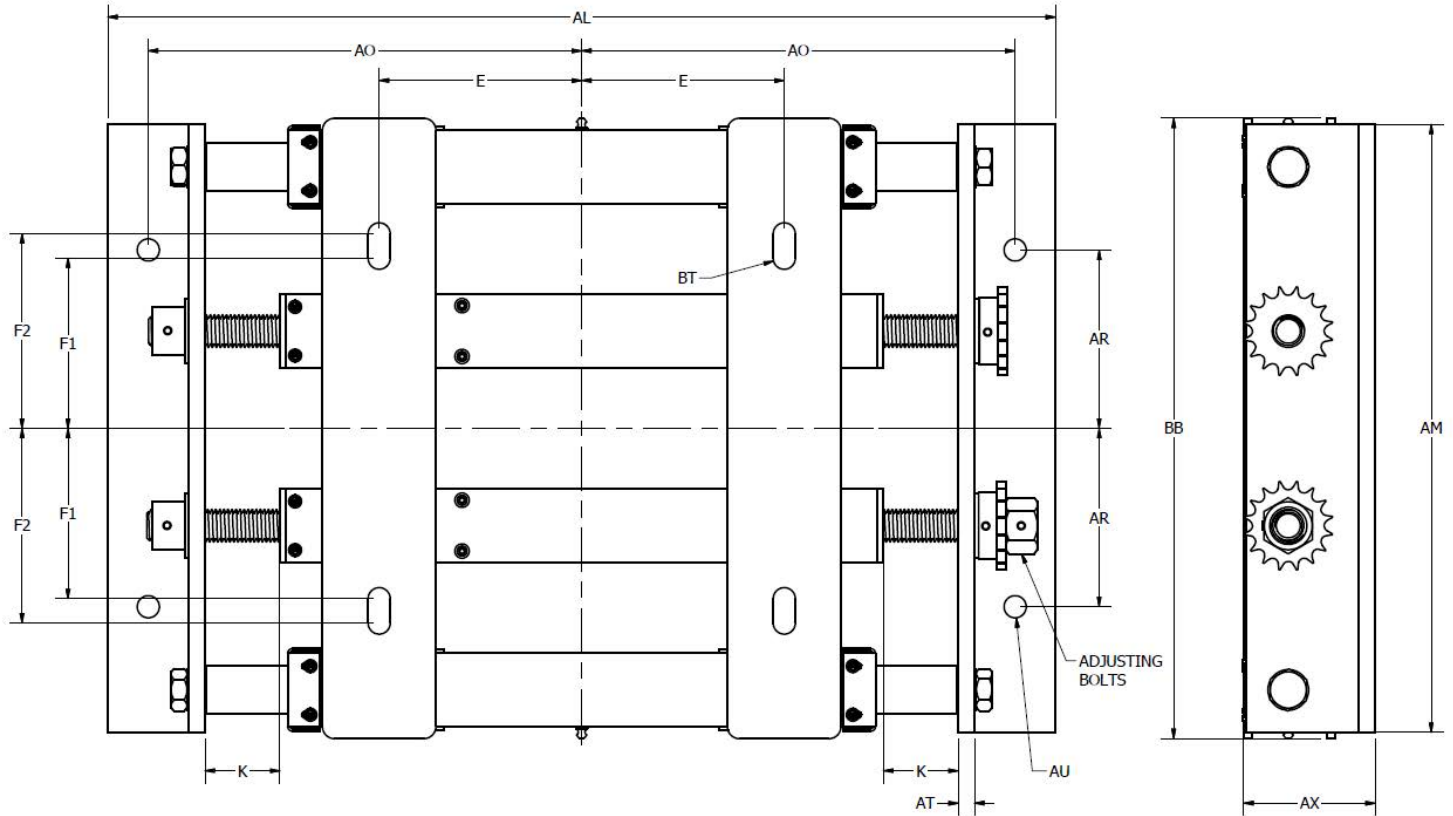


OVERLY HAUTZ COMPANY

THE WORLD'S MOST COMPLETE LINE OF MOUNTING PRODUCTS

DX900 SERIES AUTOMATIC[®] MOTOR BASES



MOUNTING POSITION AND DIMENSIONS FOR DX900 SERIES AUTOMATIC MOTOR BASES

| PART NUMBER | | FRAME SIZE | AL | AM | AX | BB | E | F1 | F2 | AO | AR | AU | BT | AT | K | ADJUSTING BOLTS |
|-------------|----------|------------|-------|-------|------|-------|------|-------|------|-------|-------|------|-------------|------|------|-----------------|
| HORIZONTAL | VERTICAL | | | | | | | | | | | | | | | |
| DX925 | | 324-326 | 29.25 | 18.75 | 4.06 | 19.13 | 6.25 | 5.25 | 6.00 | 13.38 | 5.50 | 0.69 | 0.69 X 1.44 | 0.50 | 2.31 | 1"-8 |
| | DX926 | | | | | | | | | | | | | | | |
| DX927 | | 364-365 | 32.00 | 19.50 | 4.06 | 20.00 | 7.00 | 5.63 | 6.13 | 14.75 | 6.00 | 0.69 | 0.69 X 1.25 | 0.50 | 2.81 | 1"-8 |
| | DX928 | | | | | | | | | | | | | | | |
| DX929 | | 404-405 | 34.50 | 21.75 | 4.09 | 22.25 | 8.00 | 6.13 | 6.88 | 16.00 | 6.50 | 0.81 | 0.81 X 1.63 | 0.63 | 3.00 | 1"-8 |
| | DX930 | | | | | | | | | | | | | | | |
| DX931 | | 444-445 | 37.50 | 24.25 | 4.25 | 24.88 | 9.00 | 7.25 | 8.25 | 17.50 | 7.88 | 0.81 | 0.81 X 1.88 | 0.63 | 3.50 | 1"-8 |
| | DX932 | | | | | | | | | | | | | | | |
| DX933 | | 447 | 37.50 | 27.50 | 4.19 | 27.88 | 9.00 | 10.00 | - | 17.50 | 10.00 | 0.81 | 0.81 | 0.63 | 3.56 | 1"-8 |
| | DX934 | | | | | | | | | | | | | | | |

DX925 1 SET OF RAIL GUIDES AND 1 ADJUSTING SCREW
 DX931-DX932 1 SET OF RAIL GUIDES AND 3 ADJUSTING SCREWS

DX926-DX930 1 SET OF RAIL GUIDES AND 2 ADJUSTING SCREWS
 DX933-DX934 2 SET OF RAIL GUIDES AND 4 ADJUSTING SCREWS